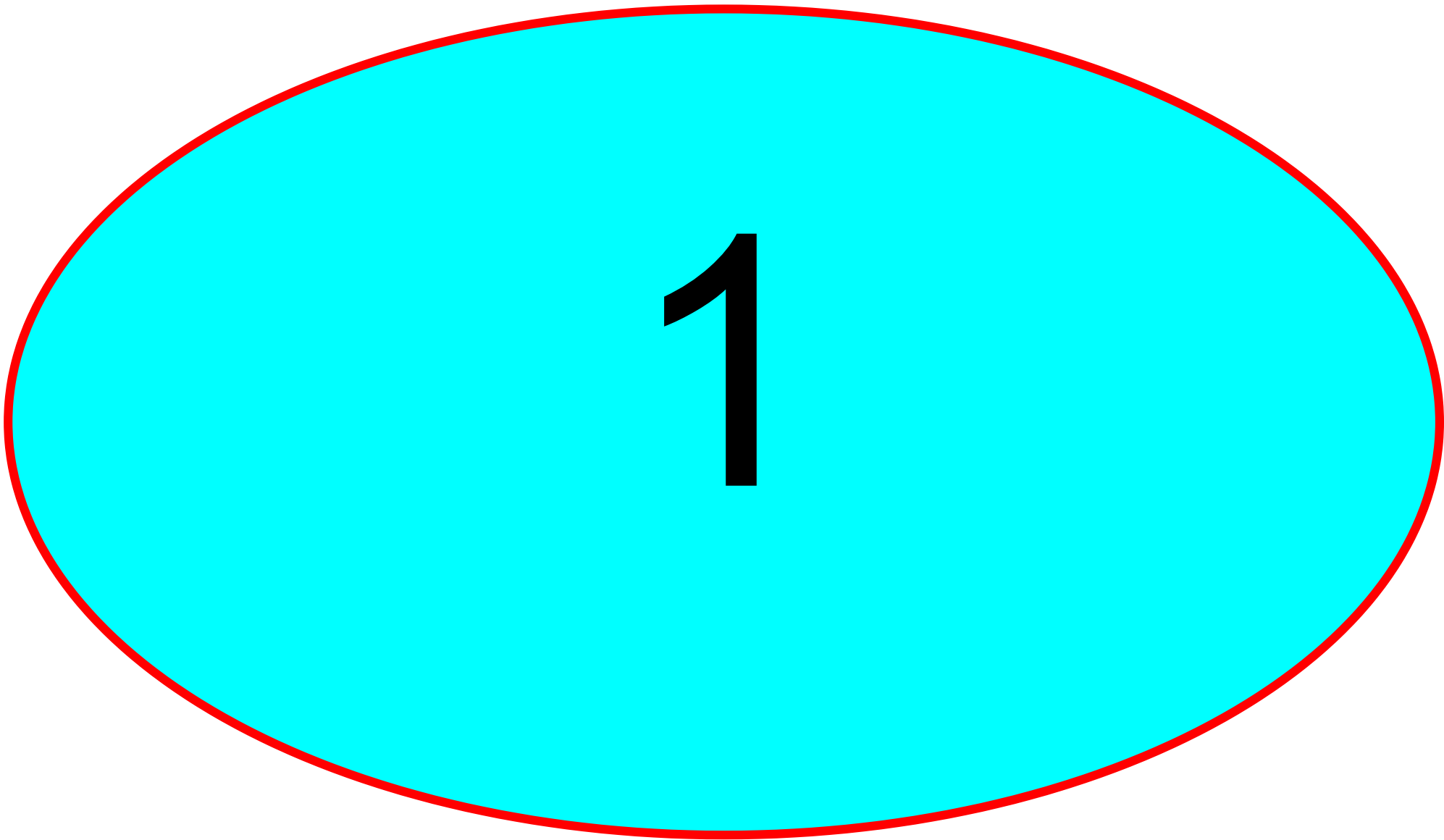
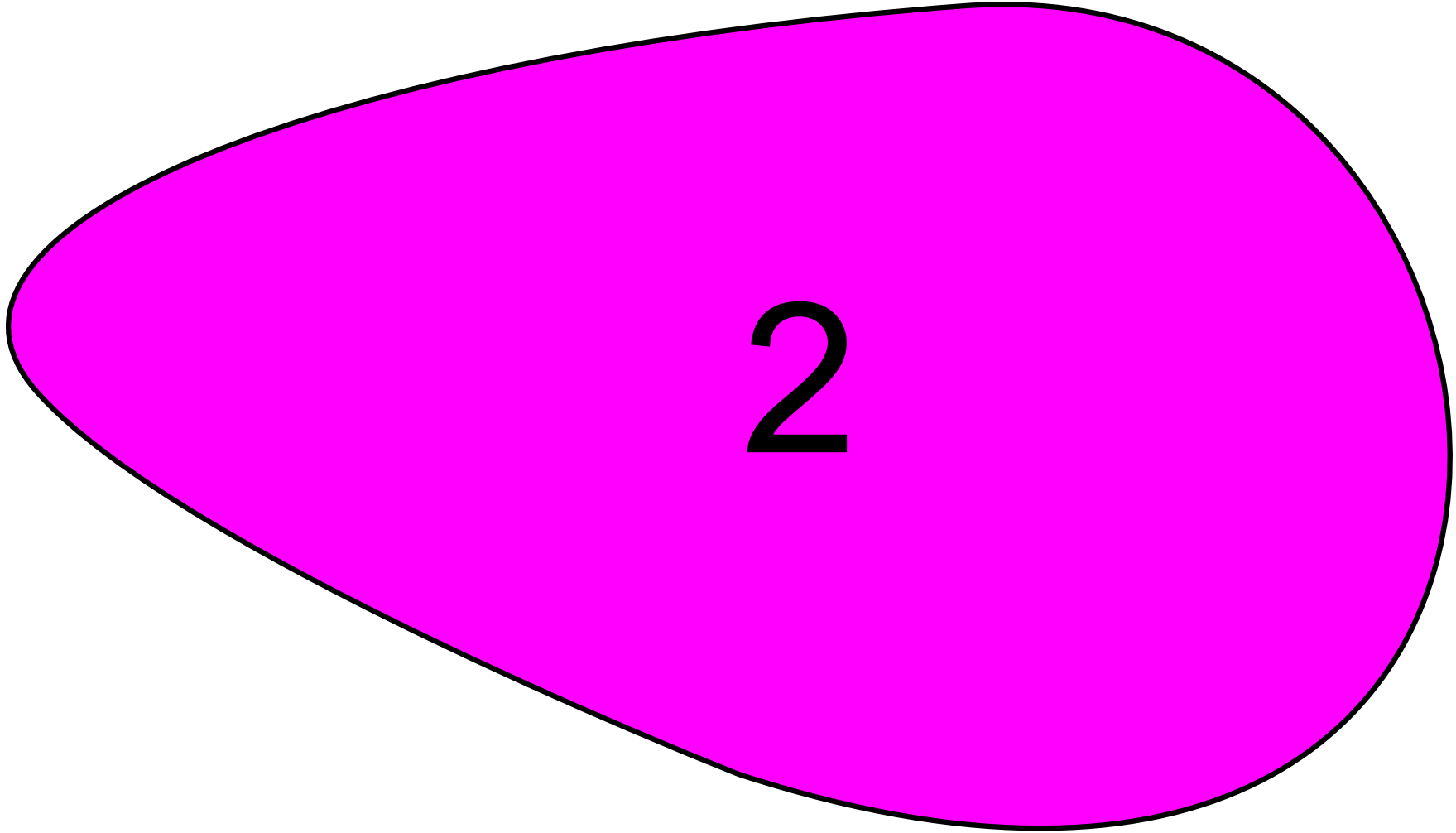


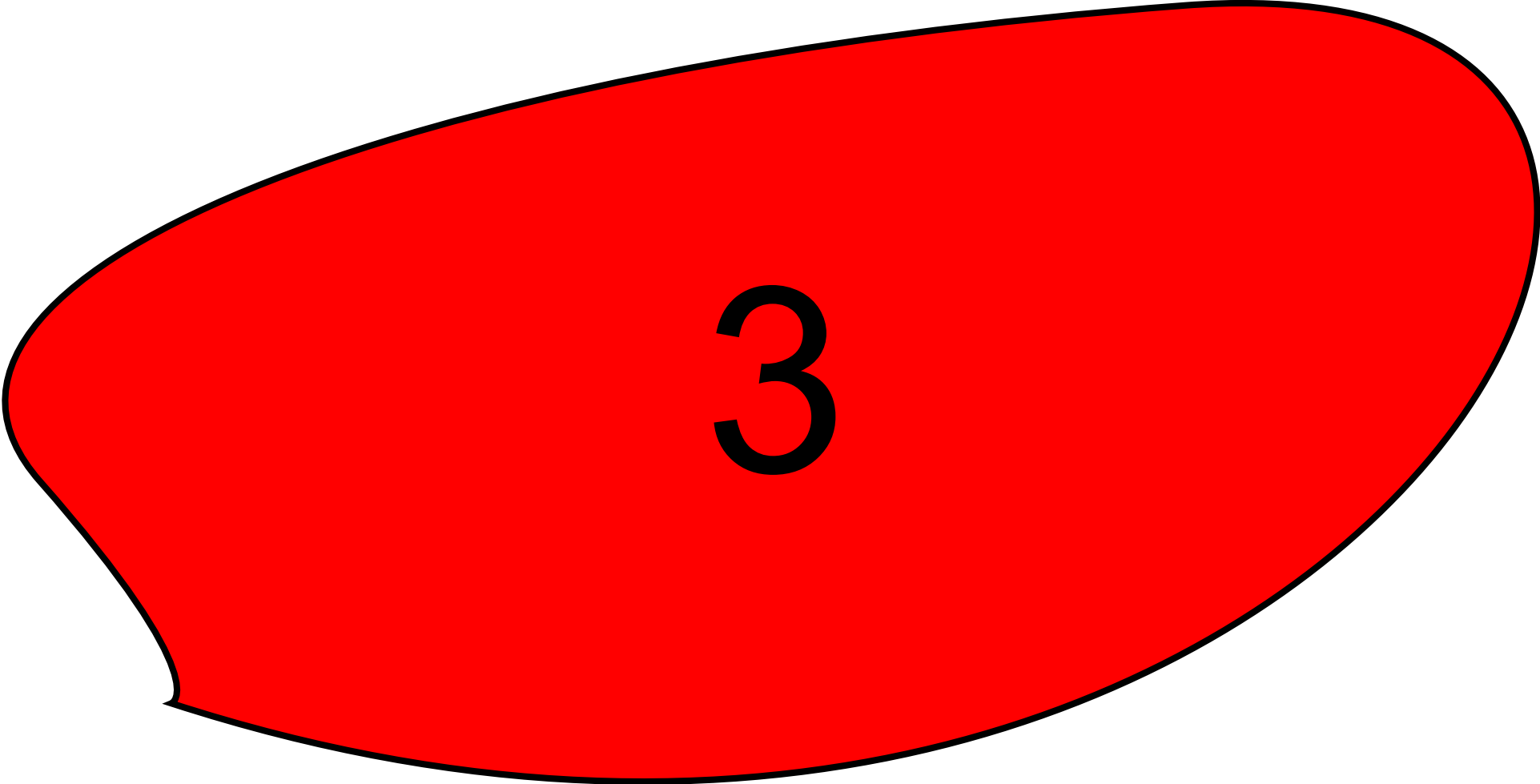


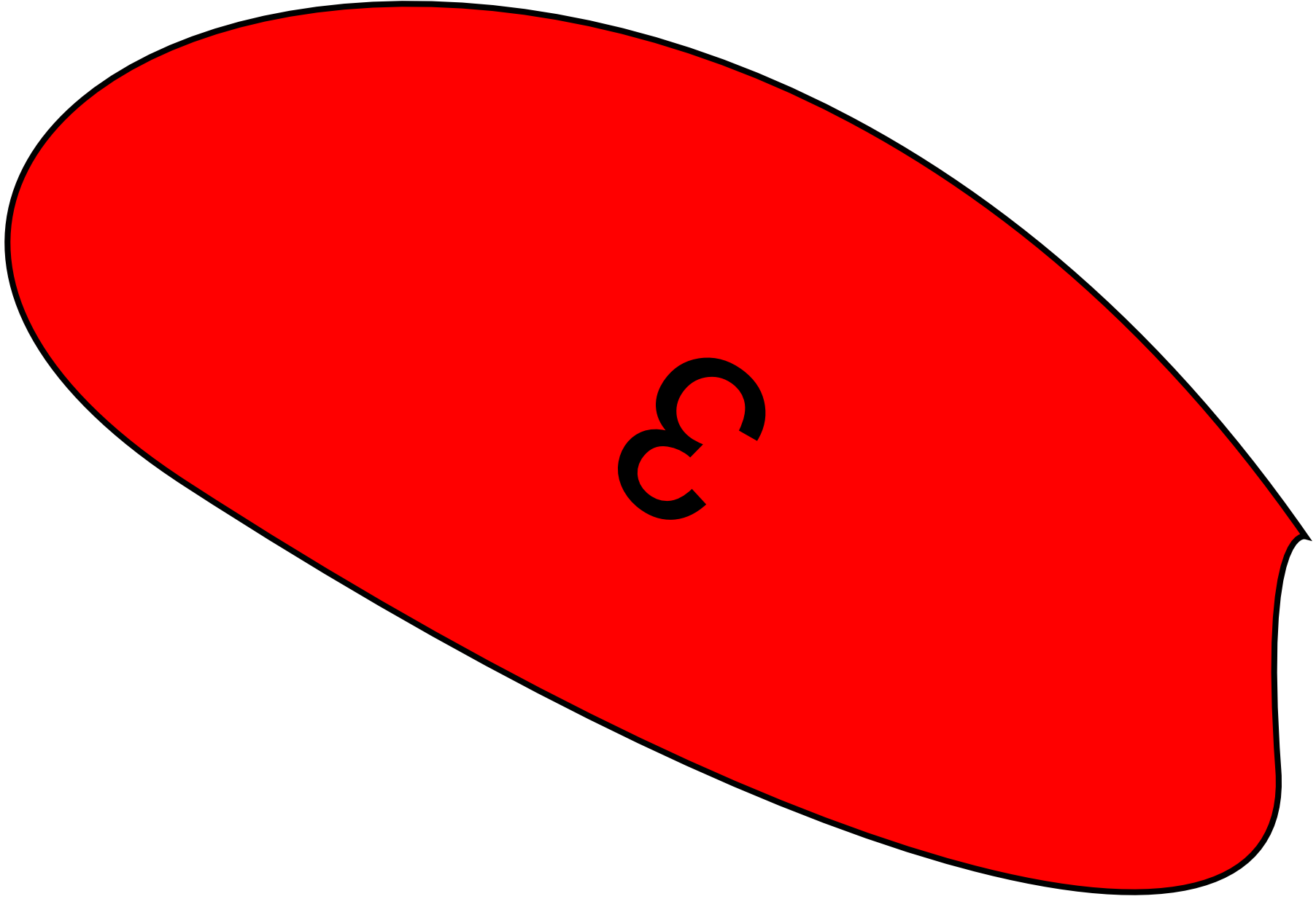
**PRESENTACIONES
LIBRES CON SOZI**

**20
23**













Espiral enlaza con EsLibre
Texto enlaza con Ovoide



Sozi <https://sozi.baierouge.fr/pages/tutorial-media.html>

[About Sozi](#) [Download and install](#) [Documentation](#) [Community](#) [Donate](#)

Embedding video and audio

Translations: [Français](#), [Português do Brasil](#), [Deutsch](#)

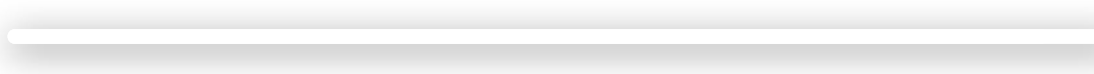
You can insert video and audio into a Sozi presentation, or even into any SVG document, using the *Add video or audio* extension for Inkscape.

Installing

1. Download the `Sozi-extras-media-[...] .zip` from the [latest release of Sozi](#).
2. The zip archive contains two files: `sozi_extras_media.inx` and `sozi_extras_media.py`.
Extract them to the Inkscape extensions folder:
 - for Linux and OS X: `~/.config/inkscape/extensions`,
 - for Windows: `C:\Program Files\Inkscape\share\extensions`,
3. Open Inkscape. In the *Extensions* menu, you should find a *Sozi extras* submenu with the item *Add video or audio*.



0:00 / 0:10







UTILIZACIÓN DE FUENTES

Fuente Calibri

Fuente FreeSans

Fuente Inspiration



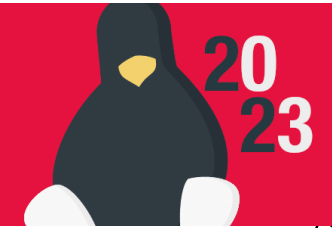
UTILIZACIÓN DE FUENTES

- CSS apunta a URL
- CSS apunta a archivo local
- CSS incrusta fuente base64

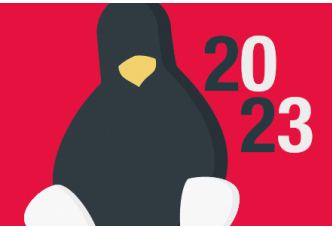


<https://gwfh.mranftl.com>

```
/* babylonica-regular - latin */
@font-face {
  font-display: swap;
  font-family: 'Babylonica';
  font-style: normal;
  font-weight: 400;
  src: url('../fonts/babylonica-v2-latin-regular.eot');
  src: url('../fonts/babylonica-v2-latin-regular.eot?#iefix') format('embedded-opentype'),
    url('../fonts/babylonica-v2-latin-regular.woff2') format('woff2'),
    url('../fonts/babylonica-v2-latin-regular.woff') format('woff'),
    url('../fonts/babylonica-v2-latin-regular.ttf') format('truetype'),
    url('../fonts/babylonica-v2-latin-regular.svg#Babylonica') format('svg');
}
```



```
/* babylonica-regular - latin */  
@font-face {  
  font-display: swap;  
  font-family: 'Babylonica';  
  font-style: normal;  
  font-weight: 400;  
  src: url('../fonts/babylonica-v2-latin-regular.eot');  
  src: url('../fonts/babylonica-v2-latin-regular.eot?#iefix') format('embedd  
    url('../fonts/babylonica-v2-latin-regular.woff2') format('woff2'),  
    url('../fonts/babylonica-v2-latin-regular.woff') format('woff'),  
    url('../fonts/babylonica-v2-latin-regular.ttf') format('truetype'),  
    url('../fonts/babylonica-v2-latin-regular.svg#Babylonica') format('svg  
}
```



```

/* babylonica-regular - latin */
@font-face {
  font-display: swap;
  font-family: 'Babylonica';
  font-style: normal;
  font-weight: 400;
  src: url('../fonts/babylonica-v2-latin-regular.woff2');
  src: url('../fonts/babylonica-v2-latin-regular.woff2?#iefix') format('embedded-opentype'),
    url('../fonts/babylonica-v2-latin-regular.woff2') format('woff2'),
    url('../fonts/babylonica-v2-latin-regular.woff') format('woff'),
    url('../fonts/babylonica-v2-latin-regular.ttf') format('truetype'),
    url('../fonts/babylonica-v2-latin-regular.svg#Babylonica') format('svg');
}

```